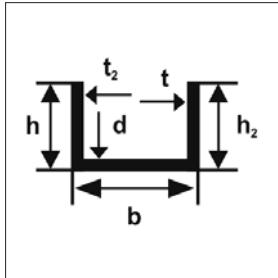


## ALUMINIUMVINKLER – LIKEBENET / ULIKEBENET

### ENAW 6060-T6 / ENAW 6082-T6

Dimensjon mm h × b × t	Lengde m	Vekt kg/m	Legering 6060	Legering 6082	Produktnr. = lagerført
15 × 15 × 2	6,0	0,16	x		001034 <b>0111</b>
20 × 20 × 2	6,0	0,22	x		001034 <b>0121</b>
20 × 20 × 3	6,0	0,31	x		001034 <b>0126</b>
25 × 15 × 2	6,0	0,22	x		001034 <b>0200</b>
25 × 25 × 3	6,0	0,40		x	001034 <b>0295</b>
25 × 25 × 4	5,0	0,52		x	001034 <b>0300</b>
30 × 20 × 2	6,0	0,27	x		001034 <b>0210</b>
30 × 30 × 3	6,0	0,48	x		001034 <b>0136</b>
30 × 30 × 5	5,0	0,77		x	001034 <b>0310</b>
40 × 25 × 2	6,0	0,36	x		001034 <b>0220</b>
40 × 40 × 3	6,0	0,65	x		001034 <b>0141</b>
40 × 40 × 4	6,0	0,86		x	001034 <b>0146</b>
40 × 40 × 5	6,0	1,05		x	001034 <b>0321</b>
50 × 30 × 4	6,0	0,85	x		001034 <b>0226</b>
50 × 40 × 4	6,0	0,97	x		001034 <b>02305</b>
50 × 40 × 5	6,0	1,17	x		001034 <b>02313</b>
50 × 50 × 5	6,0	1,33		x	001034 <b>0331</b>
50 × 50 × 6	6,0	1,58		x	001034 <b>0335</b>
60 × 30 × 5	6,0	1,19		x	001034 <b>0501</b>
60 × 60 × 6	6,0	1,92		x	001034 <b>0351</b>
65 × 50 × 6	6,0	1,84		x	001034 <b>0514</b>
65 × 65 × 6	5,0	2,09		x	001034 <b>0363</b>
65 × 65 × 8	6,0	2,74		x	001034 <b>0367</b>
75 × 40 × 5	6,0	1,54		x	001034 <b>0517</b>
75 × 50 × 6	6,0	2,00		x	001034 <b>0521</b>
75 × 50 × 7	6,0	2,32		x	001034 <b>05231</b>
75 × 50 × 8	6,0	2,62		x	001034 <b>0525</b>
75 × 75 × 8	6,0	3,10		x	001034 <b>0379</b>
75 × 75 × 9	6,0	3,56		x	001034 <b>0381</b>
80 × 40 × 3	6,0	0,95		x	001034 <b>0527</b>
90 × 50 × 6	6,0	2,25		x	001034 <b>0531</b>
100 × 50 × 6	6,0	2,42		x	001034 <b>0546</b>
100 × 50 × 7	6,0	2,81		x	001034 <b>0551</b>
100 × 50 × 8	6,0	3,18		x	001034 <b>0561</b>
100 × 65 × 6	6,0	2,69		x	001034 <b>0571</b>
100 × 65 × 8	6,0	3,52		x	001034 <b>0574</b>
100 × 65 × 9	6,0	3,94		x	001034 <b>05761</b>
100 × 75 × 8	6,0	3,70		x	001034 <b>0578</b>
100 × 100 × 10	6,0	5,32		x	001034 <b>0397</b>
130 × 65 × 8	6,0	4,19		x	001034 <b>0580</b>
130 × 75 × 9	6,0	4,94		x	001034 <b>0591</b>
150 × 75 × 9	6,0	5,45		x	001034 <b>0601</b>
150 × 100 × 10	6,0	6,72		x	001034 <b>0611</b>
200 × 100 × 10	6,0	8,12		x	001034 <b>0621</b>

OBS!: Lagerføres i enten  
5,0m eller 6,0 m lengder  
– ref. kolonne Lengde m.  
Sertifikat: EN 10204 3.1 (3.1B)

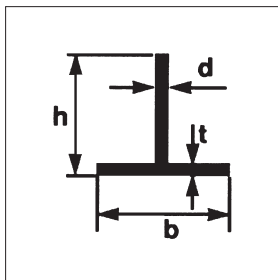


## ALUMINIUM U-PROFILER

### ENAW 6060-T6 / ENAW 6082-T6

Dimensjon mm h × b × h <sub>2</sub> × t × d × t <sub>2</sub>	Lengde m	Vekt kg/m	Legering 6060	Legering 6082	Produktnr. = lagerført
10 × 10 × 10 × 1 × 1 × 1	6,0	0,08	x		001034 <b>0655</b>
12 × 14 × 12 × 2 × 2 × 2	6,0	0,19	x		001034 <b>0665</b>
15 × 15 × 15 × 2 × 2 × 2	6,0	0,23	x		001034 <b>0669</b>
15 × 20 × 15 × 2 × 2 × 2	6,0	0,26	x		001034 <b>0675</b>
15 × 25 × 15 × 2 × 2 × 2	6,0	0,29	x		001034 <b>0679</b>
20 × 20 × 20 × 2 × 2 × 2	5,0	0,32	x		001034 <b>0685</b>
20 × 30 × 20 × 2 × 2 × 2	6,0	0,37	x		001034 <b>0706</b>
30 × 30 × 30 × 3 × 3 × 3	6,0	0,71	x		001034 <b>0740</b>
30 × 40 × 30 × 3 × 3 × 3	6,0	0,79	x		001034 <b>0751</b>
35 × 50 × 35 × 4 × 3 × 4	6,0	1,14		x	001034 <b>0761</b>
35 × 90 × 35 × 4 × 3 × 4	5,0	1,47		x	001034 <b>0780</b>
45 × 50 × 45 × 5 × 5 × 5	6,0	1,82		x	001034 <b>0766</b>
40 × 75 × 40 × 5 × 4 × 5	6,0	1,85		x	001034 <b>0771</b>
50 × 75 × 50 × 7 × 6 × 7	6,0	2,99		x	001034 <b>0775</b>
50 × 100 × 50 × 8 × 6 × 8	6,0	3,65		x	001034 <b>0791</b>
65 × 125 × 65 × 9 × 6 × 9	6,0	5,08		x	001034 <b>0811</b>
60 × 140 × 60 × 7 × 7 × 7	6,0	4,82		x	001034 <b>0821</b>
60 × 140 × 60 × 10 × 7 × 10	6,2	5,71		x	250006 <b>0047</b>
60 × 200 × 60 × 8 × 4,5 × 8	6,0	5,00		x	250007 <b>0005</b>
100 × 200 × 100 × 5 × 5 × 5	6,0	5,46		x	001034 <b>0851</b>
100 × 220 × 100 × 10 × 6 × 10	6,0	8,75		x	001034 <b>0855</b>

OBS!: Leveres enten i 5,0 m eller 6,0 m lengde  
– ref. kolonne Lengde m.  
Sertifikat: EN 10204 3.1 (3.1B)



## ALUMINIUM T-PROFILER

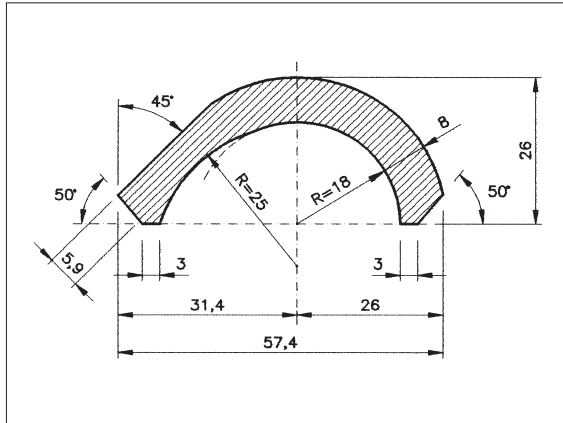
### ENAW 6060-T6 / ENAW 6082-T6

Dimensjon mm h × b × d × t	Lengde m	Vekt kg/m	Legering 6060	Legering 6082	Produktnr. = lagerført
30 × 30 × 3 × 3	5,0	0,48	x		001034 <b>0860</b>
40 × 40 × 4 × 4	5,0	0,86	x		001034 <b>0870</b>
50 × 50 × 6 × 6	5,0	1,58		x	001034 <b>0900</b>
75 × 50 × 8 × 8	6,0	2,62		x	001034 <b>0911</b>

Sertifikat: EN 10204 3.1 (3.1B)

## ALUMINIUM BÅTFENDERPROFIL

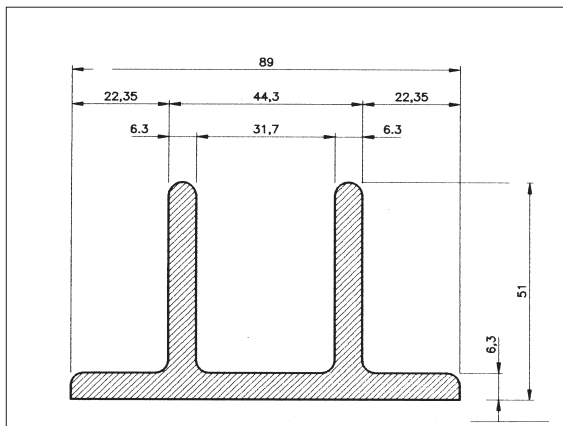
ENAW 6082-T6



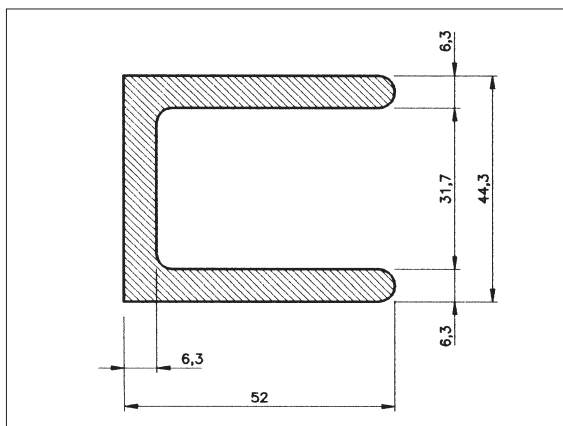
Profilnavn:	Båtfenderprofil
Profilnr.:	4T-174
Lagerlengde:	5,0 m
Vekt:	1,55 kg/m
Sertifikat:	EN 10204 3.1 (3.1B)
Produktnr.:	001050 <b>0107</b>

## ALUMINIUM LASTEROMPROFILER

ENAW 6082-T6



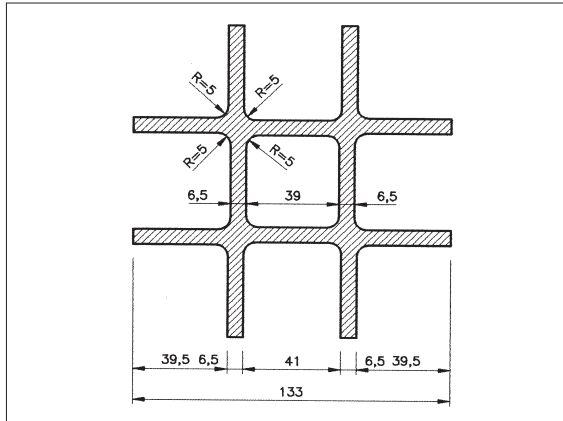
Profilnavn:	Lasteromprofil
Profilnr.:	7241 (M = 1:2)
Lagerlengde:	6,0 m
Vekt:	3,07 kg/m
Sertifikat:	EN 10204 3.1 (3.1B)
Produktnr.:	001034 <b>0950</b>



Profilnavn:	Lasteromprofil
Profilnr.:	7242 (M = 1:2)
Lagerlengde:	6,0 m
Vekt:	2,38 kg/m
Sertifikat:	EN 10204 3.1 (3.1B)
Produktnr.:	001034 <b>0951</b>

## ALUMINIUM STØTTEPROFIL

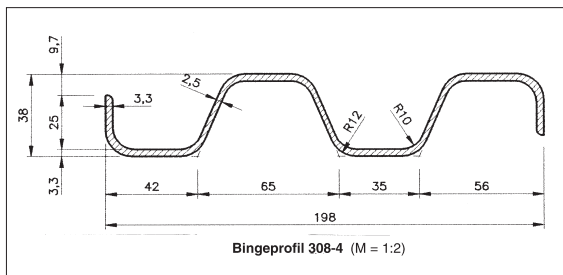
ENAW 6082-T6



Profilnavn:	Støtteprofil
Profilnr.:	384-4 (M = 1:2)
Lagerlengde:	6,0 m
Vekt:	9,23 kg/m
Sertifikat:	EN 10204 3.1 (3.1B)
Produkt nr.:	001050 <b>0210</b>

## ALUMINIUM BINGEPROFILER

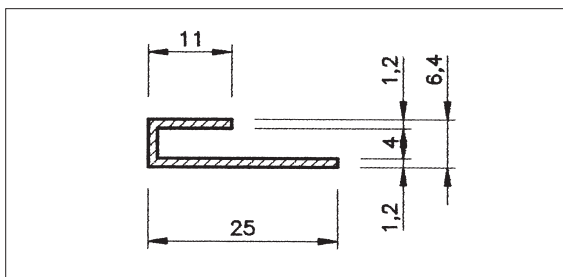
ENAW 6082-T6



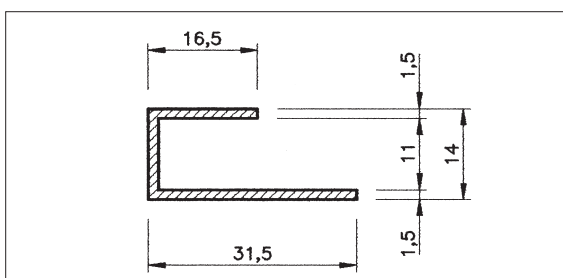
Profilnavn:	Bingeprofil
Profilnr.:	308-4 (M = 1:2)
Lagerlengde:	6,9 m
Vekt:	2,46 kg/m
Sertifikat:	EN 10204 3.1 (3.1B)
Produkt nr.:	001050 <b>0200</b>

## ALUMINIUM MONTERINGSPROFILER

ENAW 6060-T6



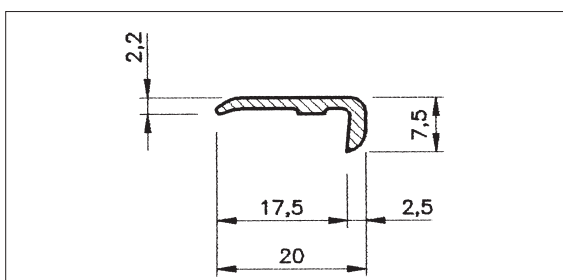
Profilnavn:	Monteringsprofil
Profilnr.:	B-105
Lagerlengde:	5,0 m
Vekt:	0,135 kg/m
Produktnr.:	001050 <b>0918</b>
Perimeter::	81



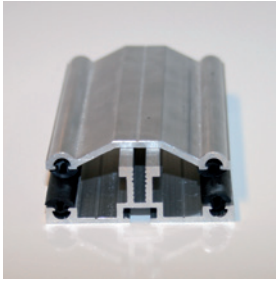
Profilnavn:	Monteringsprofil
Profilnr.:	B-205
Lagerlengde:	5,0 m
Vekt:	0,245 kg/m
Produktnr.:	001050 <b>0930</b>
Perimeter::	119

## ALUMINIUM KANTPROFIL – NATURELOKERT

ENAW 6060-T6



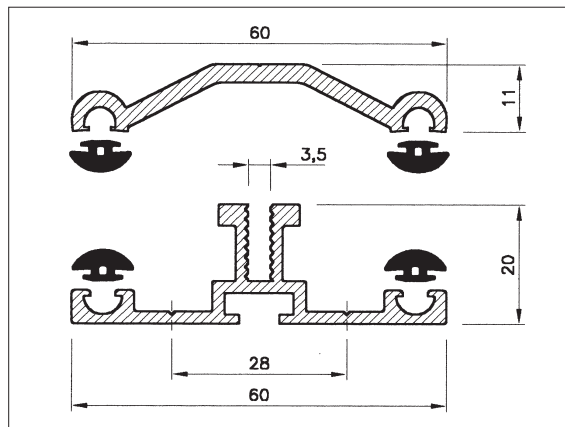
Profilnavn:	Kantprofil
Profilnr.:	4T-284
Lagerlengde:	5,0 m
Vekt:	0,12 kg/m
Produktnr.:	001050 <b>0150</b>
Perimeter::	53



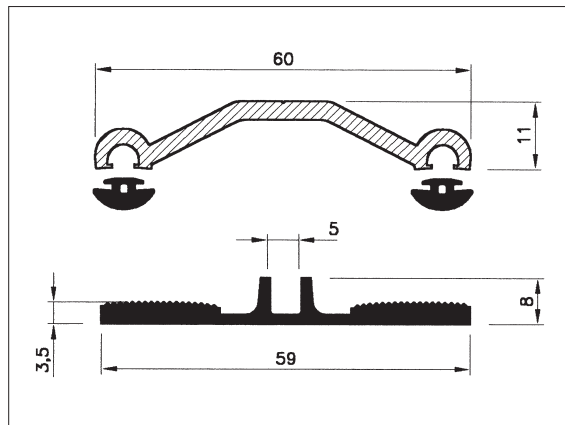
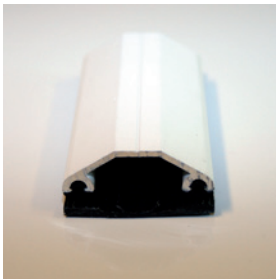
## ALUMINIUM PROFILSETT

### Skjøteprofiler for kanalplater og massive PC eller PMMA plater

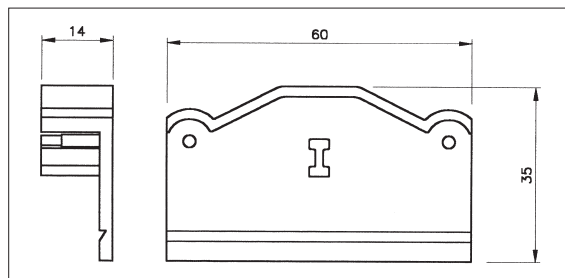
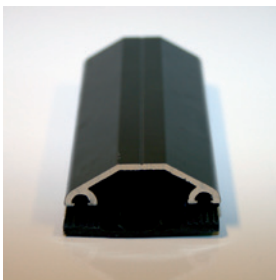
Profilsett 226/227 består av aluminium dekkprofil og underprofil, med gummi tetningslister. Profilsett 226/261 består av aluminium dekkprofil med gummi tetningslister og gummi underprofil. Plast endestykke passer begge profilsettene. Hvit og brunlakkerte profiler leveres på forespørsel.



Profilnavn: Alu/Alu klemsett  
 Profilnr.: 226/227P,  
 ueloksert  
 Lagerlengde: 4,0 m  
 Produktnr.: 364399 **0150**



Profilnavn: Alu/Gummi  
 klemsett  
 Profilnr.: 226/261P,  
 ueloksert  
 dekkprofil  
 Lagerlengde: 4,0 m  
 Produktnr.: 364399 **0100**

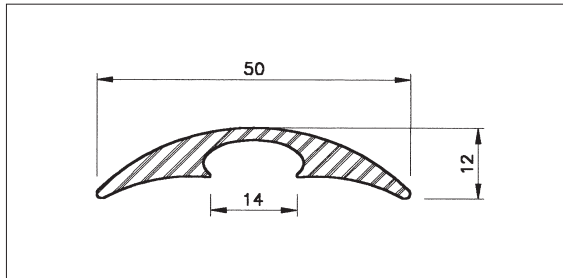


Profilnavn: Endestykke for  
 klemsett  
 Produktnr.: 364399 **0200**



## ALUMINIUM SKJØTEPROFIL MED PVC DEKKPROFIL

For skjøting av PP veggpaneler

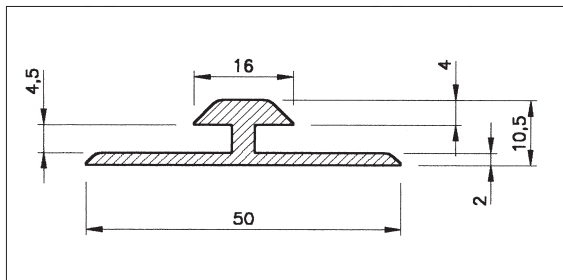


Profilnavn: Dekkprofil,  
hvit PVC

Lagerlengde: 6,0 m

Produktnr.: 387034 **1890**

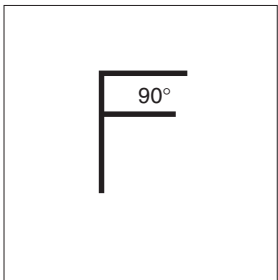
Hygieniske PP veggpaneler i polypropylen benyttes mye innen næringsmiddelindustrien.



Profilnavn: Skjøteprofil,  
aluminium  
ueloksert

Lagerlengde: 6,0 m

Produktnr.: 387034 **1900**

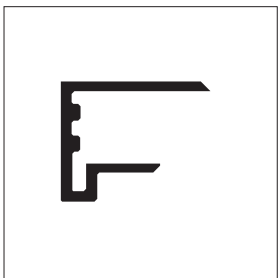


## ALUMINIUM F-PROFIL

Dimensjon mm	Grader	Produktnr. = lagerført
10,0	90°	364399 <b>0205</b>
16,0	90°	364399 <b>0203</b>

Profilnavn: F-profil,  
sideavslutning  
for plater  
i tykkelse  
10 og 16 mm

Lagerlengde: 4,0 m



## ALUMINIUM U-PROFIL

Med dryppenese

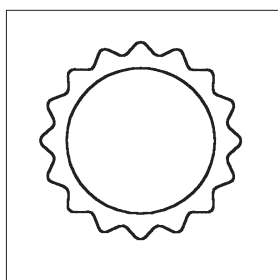
Dimensjon mm	Produktnr. = lagerført
10,0	364399 <b>1030</b>
16,0	364399 <b>0207</b>

Profilnavn: U-profil,  
for plater  
i tykkelse  
10 og 16 mm

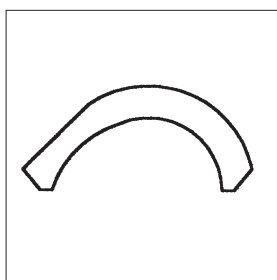
Lagerlengde: 3,0 m

## PROFILOVERSIKT ALUMINIUMPROFILER MED PRODUKTNUMMER

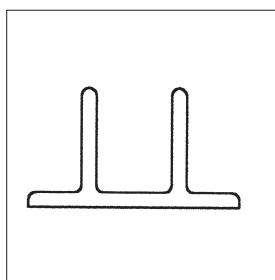
Profiltegningene er ikke gjengitt i korrekt størrelsesforhold.  
For målsatte profiltegninger se oppgitt katalogside.



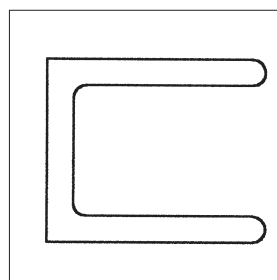
Profilnavn: Riflerør  
Produktnr.: 001060 **0020**  
Katalogside: 24



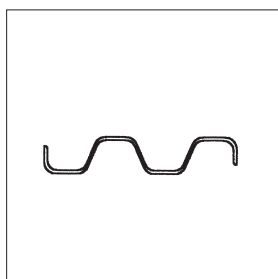
Profilnavn: Båtfenderprofil  
Profilnr.: 4T-174  
Produkt.: 001050 **0107**  
Katalogside: 31



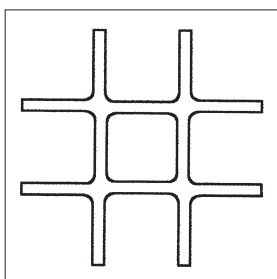
Profilnavn: Lasteromprofil  
Profilnr.: 7241  
Produktnr.: 001034 **0950**  
Katalogside: 31



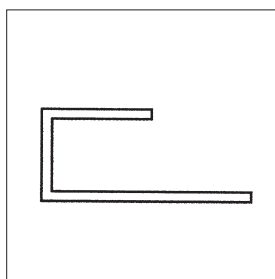
Profilnavn: Lasteromprofil  
Profilnr.: 7242  
Produktnr.: 001034 **051**  
Katalogside: 31



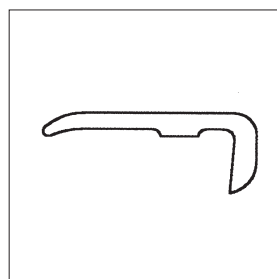
Profilnavn: Bingeprofil  
Profilnr.: 308-4  
Produktnr.: 001050 **0200**  
Katalogside: 32



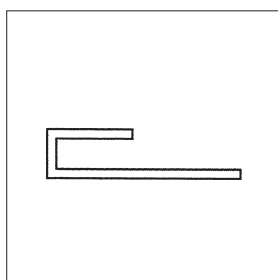
Profilnavn: Støtteprofil  
Profilnr.: 384-4  
Produktnr.: 001050 **0210**  
Katalogside: 32



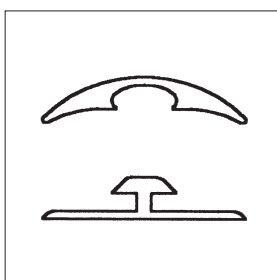
Profilnavn: Monteringsprofil  
Profilnr.: B205  
Produktnr.: 001050 **0930**  
Katalogside: 33



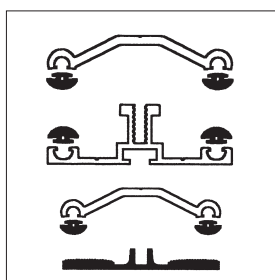
Profilnavn: Kantprofil  
Profilnr.: 4T-284  
Produktnr.: 001050 **0150**  
Katalogside: 33



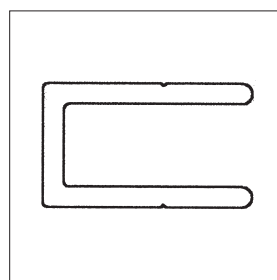
Profilnavn: Monteringsprofil  
Profilnr.: B105  
Produktnr.: 001050 **0918**  
Katalogside: 33



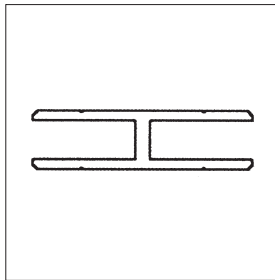
Profilnavn: Skjøteprofil m/dekkprofil  
Profilnr.: (for Propylex plater)  
Produktnr.: 387034 **1890**  
387034 **1900**  
Katalogside: 35



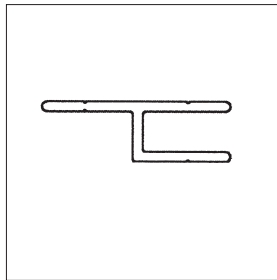
Profilnavn: Profilsett for plater  
Profilnr.: 226/227P og 226/261P  
Produktnr.: 364399 **0150**  
364399 **0100**  
Katalogside: 34



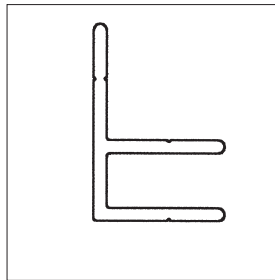
Profilnavn: Amplinett U-profil  
Profilnr.: 321095  
Produktnr.: 242053 **0500**  
242053 **0505**  
eloksert  
Katalogside: 46



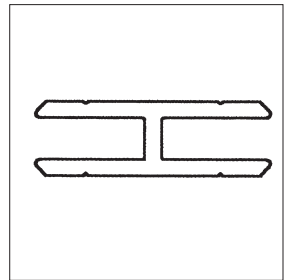
Profilnavn: Amplinet  
H-profil  
Profilnr.: 321455  
Produktnr.: 242053 **0530**  
242053 **0535**  
eloksert  
Katalogside: 46



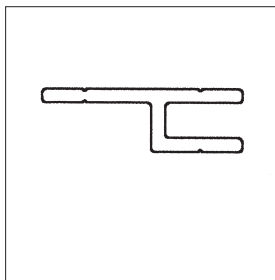
Profilnavn: Amplinet  
omram.prof  
Profilnr.: 321096  
Produktnr.: 242053 **0510**  
242053 **0515**  
eloksert  
Katalogside: 46



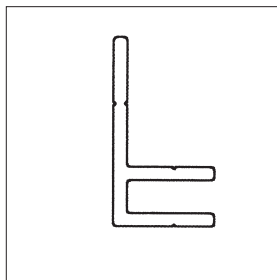
Profilnavn: Amplinet  
omramming  
Profilnr.: 321097  
Produktnr.: 242053 **0520**  
242053 **0525**  
eloksert  
Katalogside: 46



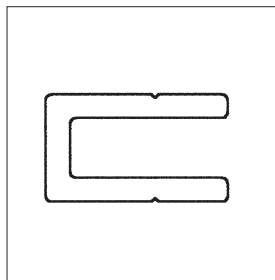
Profilnavn: Amplinet  
H-profil  
Profilnr.: 321102  
Produktnr.: 242053 **0560**  
Katalogside: 47



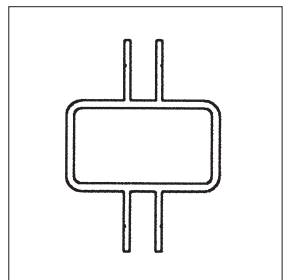
Profilnavn: Amplinet  
omram.prof  
Profilnr.: 321100  
Produktnr.: 242053 **0537**  
Katalogside: 47



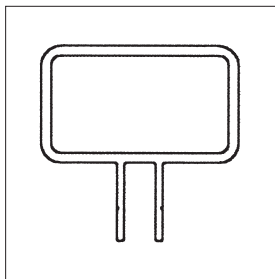
Profilnavn: Amplinet  
omramming  
Profilnr.: 321101  
Produktnr.: 242053 **0550**  
Katalogside: 47



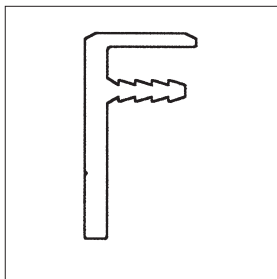
Profilnavn: Amplinet  
U-profil  
Profilnr.: 321103  
Produktnr.: 242053 **0570**  
Katalogside: 47



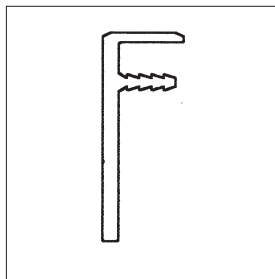
Profilnavn: Amplinet  
tilbehørsprof  
Profilnr.: 321108  
Produktnr.: 242053 **0590**  
Katalogside: 48



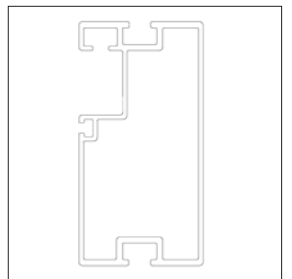
Profilnavn: Amplinet  
tilbehørsprof  
Profilnr.: 321107  
Produktnr.: 242053 **0580**  
Katalogside: 48



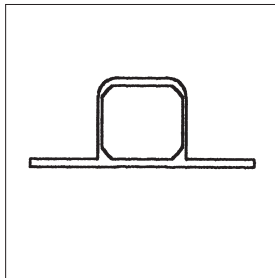
Profilnavn: Amplinet  
Endeprofil  
Profilnr.: 321104  
Produktnr.: 242058 **0500**  
Katalogside: 49



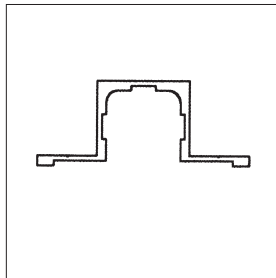
Profilnavn: Amplinet  
Endeprofi  
Profilnr.: 321106  
Produktnr.: 242058 **0550**  
Katalogside: 49



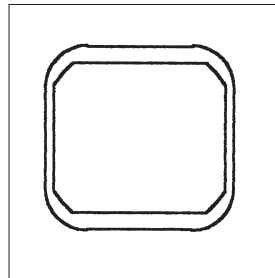
Profilnavn: Vangeprofil  
Profilnr.: ASVOPO2  
Produktnr.: 241395 **0238**  
Katalogside: 55



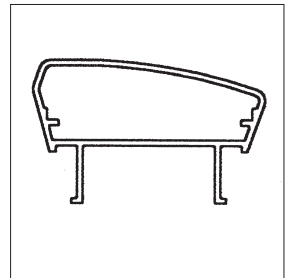
Profilnavn: Stenderprofil  
m/flens  
Profilnr.: 1401-4  
Produktnr.: 241395 **0310**  
Katalogside: 57



Profilnavn: Festeprofil  
Profilnr.: 1307-4  
Produktnr.: 241395 **0330**  
Katalogside: 57



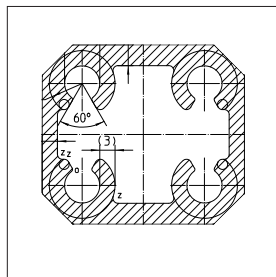
Profilnavn: Stenderprofil  
Profilnr.: 1318-4  
Produktnr.: 241395 **0300**  
Katalogside: 57



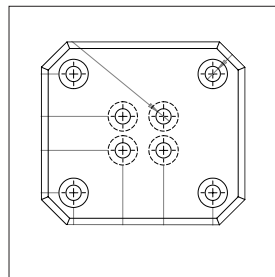
Profilnavn: Håndløperprofil  
Profilnr.: 4T-709  
Produktnr.: 241395 **0345**  
Katalogside: 57



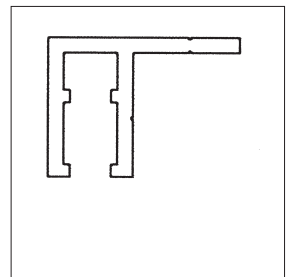
Profilnavn: Plastlokk  
Produktnr.: 241395 **7010**  
Katalogside: 58



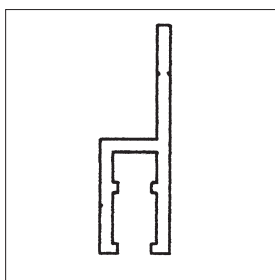
Profilnavn: Stenderfeste  
Produktnr.: 241395 **03165**  
Katalogside: 58



Profilnavn: Fotplate  
Produktnr.: 241395 **03166**  
Katalogside: 58



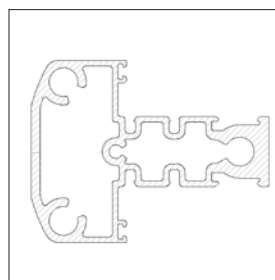
Profilnavn: Omrammings-  
profil  
Profilnr.: 1125-4  
Produktnr.: 242060 **0920**  
Katalogside: 60



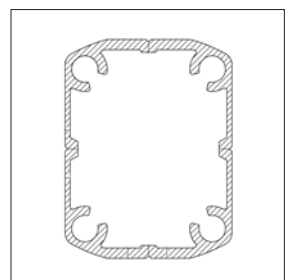
Profilnavn: Omrammings-  
profil  
Profilnr.: 1123-4  
Produktnr.: 242060 **0910**  
Katalogside: 60



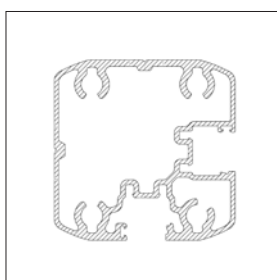
Profilnavn: Plastlokk til  
stender  
Produktnr.: 241395 **7020**  
Katalogside: 60



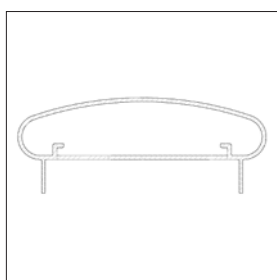
Profilnavn: Stender for  
fylling  
Produktnr.: ASU19664N  
natureloksert  
Produktnr.: ASU19664  
ubehandlet  
Katalogside: 61



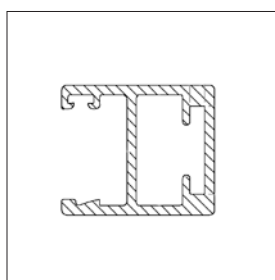
Profilnavn: Stender  
Produktnr.: ASU19572N  
natureloksert  
Produktnr.: ASU19572  
ubehandlet  
Katalogside: 61



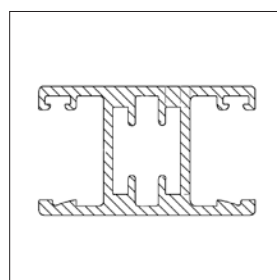
Profilnavn: Hjørnestolpe  
 Produktnr: ASU19573N  
 natureloksert  
 Produktnr: ASU19573  
 ubehandlet  
 Katalogside: 61



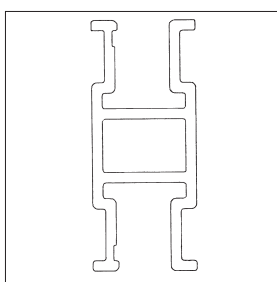
Profilnavn: Håndløper  
 Produktnr: ASU19569N  
 natureloksert  
 Produktnr: ASU19569  
 ubehandlet  
 Katalogside: 61



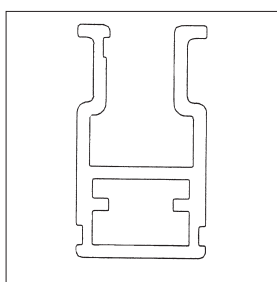
Profilnavn: Omramning  
 enkel  
 Produktnr: ASU19651N  
 natureloksert  
 Produktnr: ASU19651  
 ubehandlet  
 Katalogside: 61



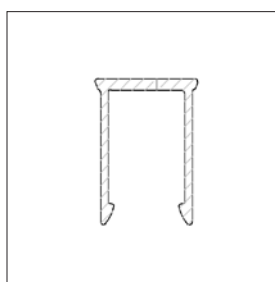
Profilnavn: Omramning  
 dobbel  
 Produktnr: ASU19650N  
 natureloksert  
 Produktnr: ASU19650  
 ubehandlet  
 Katalogside: 61



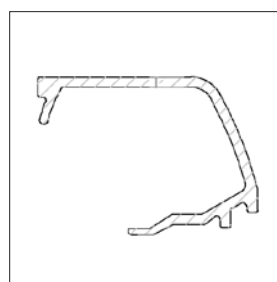
Profilnavn: Omrammings-  
 profil  
 Produktnr.: 241395 **0327**  
 Katalogside: 60



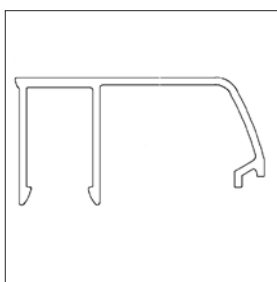
Profilnavn: Omrammings-  
 profil  
 Produktnr.: 241395 **0325**  
 Katalogside: 60



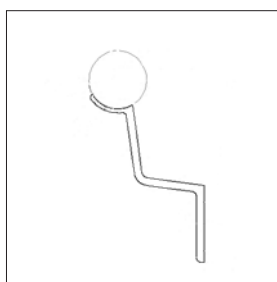
Profilnavn: Dekklist  
 Produktnr: ASU19574N  
 natureloksert  
 Produktnr: ASU19574  
 ubehandlet  
 Katalogside: 62



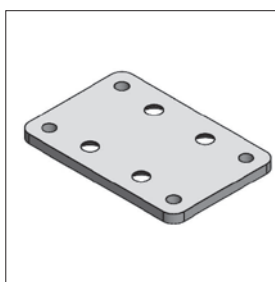
Profilnavn: Glasslist  
 Produktnr: ASU19571N  
 natureloksert  
 Produktnr: ASU19571  
 ubehandlet  
 Katalogside: 62



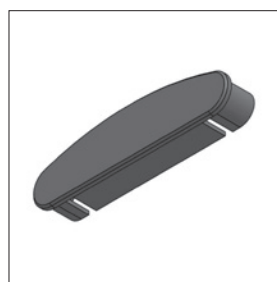
Profilnavn: Glasslist  
 Produktnr: ASU19571N  
 natureloksert  
 Produktnr: ASU19571  
 ubehandlet  
 Katalogside: 62



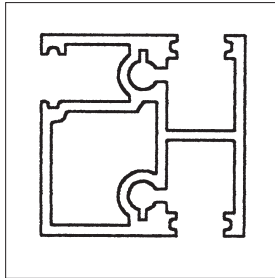
Profilnavn: Håndløperfeste  
 Produktnr: 24139503/8  
 natureloksert  
 Produktnr: ASU19571  
 ubehandlet  
 Katalogside: 62



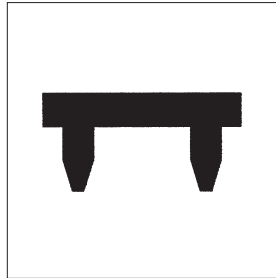
Fotplate  
 Produktnr.: ASU30123N  
 Katalogside: 63



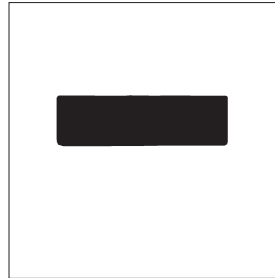
Plastlokk for håndløper  
 Produktnr.: ASU30160  
 Katalogside: 63



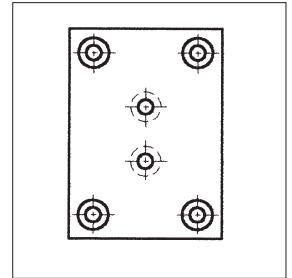
Profilnavn: Balkongskjerm-  
profil  
 Profilnr.: 716-4  
 Produktnr.: 001050 **0775**  
 Katalogside: 65



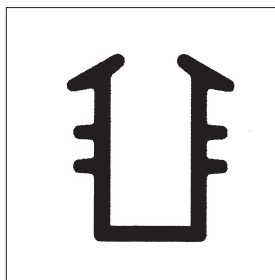
Profilnavn: Endelukk for  
balkongskjerm-  
profil  
 Produktnr.: 001398 **0926**  
 Katalogside: 65



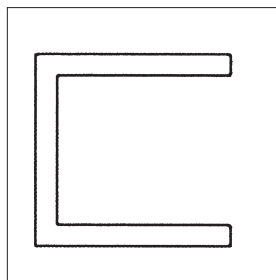
Profilnavn: PVC utfyllingslist  
for balkongs-  
kjermprofil  
 Produktnr.: 001398 **0900**  
 Katalogside: 65



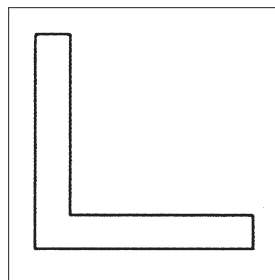
Profilnavn: Fotplate for  
balkong skjerm-  
profil  
 Produktnr.: 001398 **0925**  
 Katalogside: 65



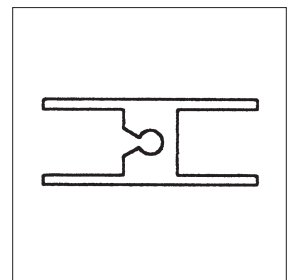
Profilnavn: Gummi  
tetningslist  
 Profilnr.: 1428  
 Produktnr.: 389034 **0100**  
 Katalogside: 66



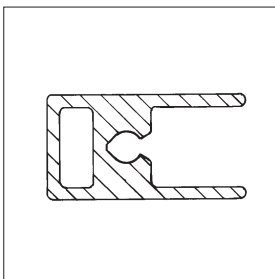
Profilnavn: Festeprofil  
 Profilnr.: 18 x 18 x 18 x 2  
 Produktnr.: 389034 **1100**  
 Katalogside: 66



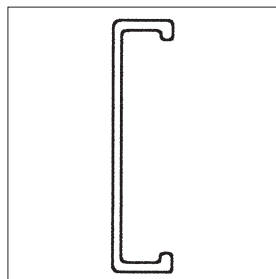
Profilnavn: Hjørnevinkel  
 Profilnr.: 25 x 25 x 4  
 Produktnr.: 389398 **0100**  
 Katalogside: 66



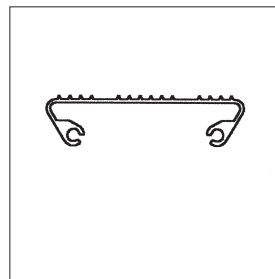
Profilnavn: Skjøteprofil  
 Profilnr.: 1408-4  
 Produktnr.: 389034 **1019**  
 Katalogside: 66



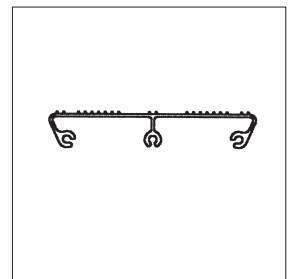
Profilnavn: Rammeprofil  
 Profilnr.: 1407-4  
 Produktnr.: 389034 **1000**  
 Katalogside: 66



Profilnavn: Vangeprofil  
 Profilnr.: 4T-028  
 Produktnr.: 001050 **0100**  
 Katalogside: 67



Profilnavn: Trinnsprofil  
 Profilnr.: 626-4  
 Produktnr.: 001050 **0120**  
 Katalogside: 67



Profilnavn: Trinnsprofil  
 Profilnr.: 410-4  
 Produktnr.: 001050 **0110**  
 Katalogside: 67